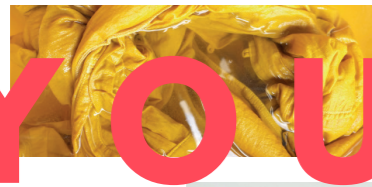


# MAKE



Girlfriend Collective



# YOU



"The more you know the less you need" - Yvon Chouinard, Patagonia

# WEAR



Ecoalf

Do you know who made your clothes, or where they came from? Ever thought of making them yourself?

Now's your chance! Come for a full day of workshops exploring sustainable ways of reusing, repairing, and making your clothes. Learn amazing new techniques for making and mending your clothes - from ancient techniques such as natural fabric dyeing to innovative ways of growing bacteria to create alternative textiles.

Even if you've never thought about making your own clothes, this is a great opportunity to try out loads of things in the maker space and learn something new with all the Warehouse's resources

It will be a fun and relaxed day exploring the clothing industry and focusing on ethical, organic, fair trade and innovative materials. Learn about interesting techniques and brands that are pioneering in sustainable fashion clothing!

# 10 AUG

11am - 4pm



Pangala



Pretencaga



Pinatex



Wyatt & Jack



## MAKE WHAT YOU WEAR PLANET FRIENDLY



Smart Fiber AG

**MAKE WHAT YOU WEAR INSPIRATION**  
11.00 - 11.30am  
Learn about slow fashion, the social impact of the fashion industry and how you can learn new conscious ways of creating a sustainable wardrobe.

**GREEN LAB MATERIALS DEMONSTRATION**  
2.00 - 3.00pm  
Explore all of Green Lab's materials. Unique and inspiring materials you can use to make new textiles, clothes, and products.

**SCREENINGS**  
11.00am - 4.00pm  
Watch a few short films on why we need to think differently about what we wear and how we can become more conscious of our wardrobe choices.

## MAKE WHAT YOU WEAR NATURAL



Green Lab (c) 2018

**GROW YOUR OWN FABRIC**  
2.00 - 3.00pm  
Learn how to make fabric from bacteria that you can grow yourself.



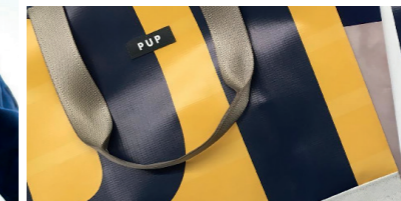
**PLANT TO PRINT**  
12.00 - 1.00pm  
Fabric dyeing and printing using natural plant-based dyes.

## MAKE WHAT YOU WEAR BEAUTIFUL



Inaam in The Rain

**SUSTAINABLE MATERIALS LAB**  
11.00 - 4.00pm  
Walk through an introduction to sustainable materials and products, with a variety of examples showing the journey from raw materials to the redesign and redevelopment of fabric giving it new purpose.



People for Urban Progress



**LASER CUT DESIGNS**  
12.00 - 1.00pm  
A demonstration of how to laser cut polyester clothing.



## MAKE WHAT YOU WEAR YOURSELF

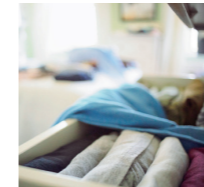
**MEET THE MACHINES**  
2.00 - 3.30pm  
Explore the machines at the warehouse, such as embroidery machine, industrial sewing machine, overlocker, silhouette cutter and heat press.

## MAKE WHAT YOU WEAR INTO A PLANET FRIENDLY BUSINESS



**WHAT IS A CAPSULE COLLECTION?**  
1.00 - 2.00pm  
Get ready to make and sell! Learn all about how you can participate in our business programmes.

**PLASTIC REVOLUTION**  
3.00 - 4.00pm  
Learn how to shred and melt old plastic bottles into fashion accessories and pieces such as buttons.



**ORGANISE YOUR WARDROBE**  
11.30am - 12.00pm  
Learn tips and tricks of how to declutter, organise and style your wardrobe. Less is definitely more!



## MAKE WHAT YOU WEAR RECYCLED

## MAKE WHAT YOU WEAR OPEN SOURCE



**OPEN SOURCE PATTERN CUTTING**  
3.00 - 4.00pm  
Learn how to download and print thousands of free open source patterns that you can print out, adapt and make into your own clothing designs.

## MAKE WHAT YOU WEAR UPCYCLED



**DENIM PATCHWORK**  
2.00 - 4.00pm  
Work with some top fashion designers to upcycle materials to make a cool patch for your clothing.



**MINI MAKERS!**  
2.00 - 3.00pm  
Bring along an old t-shirt to re-design using the off cuts from vinyl by creating cool new patterns.



## MAKE WHAT YOU WEAR REPAIRED

**MENDING MATTERS**  
3.00 - 4.00pm  
Mending Matters! Make your clothes look brand new by mending them with four practical techniques that you'll learn.



**FASHION YOUR FURNITURE**  
12.00 - 1.00pm  
Pimp up your used and loved furniture items with old clothes, textiles and industrial waste. Give it a new lease of life!

# 47 THAMES ROAD